

2020 North Complex


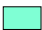


Fire Severity & Progression



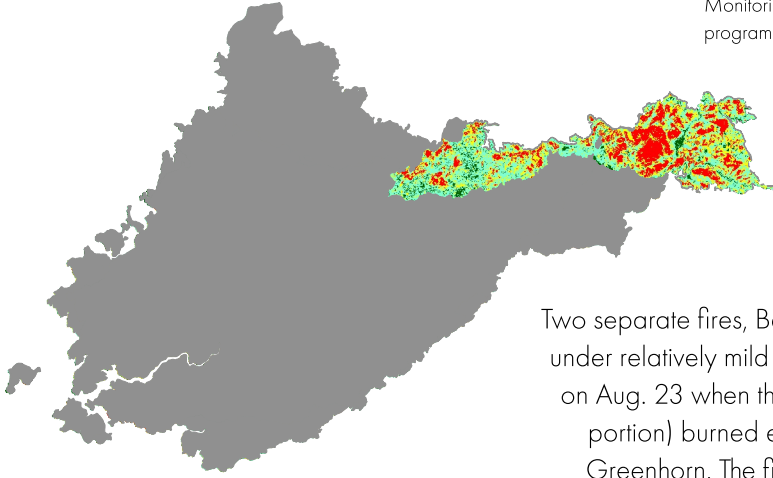
0 5 10 mi



Fire Severity*

-  Unburned to Low
-  Low
-  Moderate
-  High

* Data obtained from the multi-agency Monitoring Trends in Burn Severity (MTBS) program.

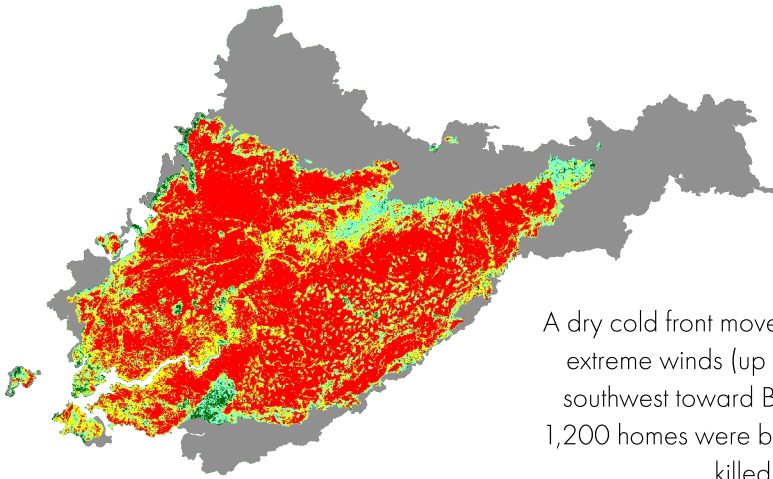


Aug. 17 - Sept. 7

40,049 acres

23% High Severity

Two separate fires, Bear and Claremont, burned under relatively mild weather conditions except on Aug. 23 when the Claremont Fire (eastern portion) burned east toward the town of Greenhorn. The fires merged on Sept. 5.

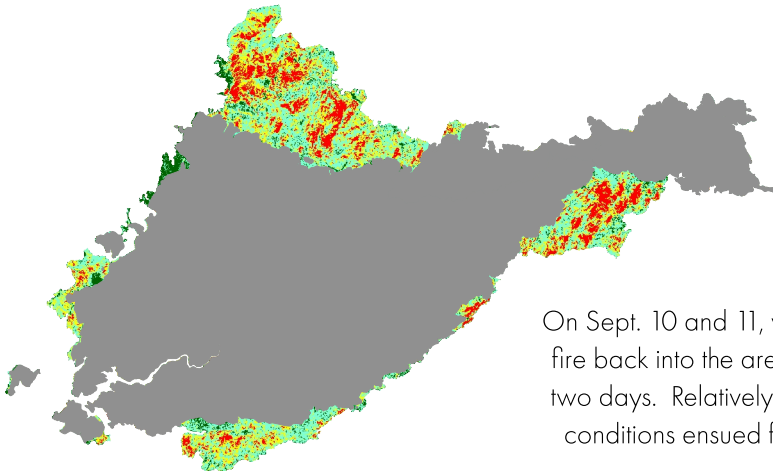


Sept. 8 - 9

204,431 acres

62% High Severity

A dry cold front moved in from the northeast and extreme winds (up to 45 mph) drove the fire southwest toward Berry Creek, where nearly 1,200 homes were burned and 14 people were killed on Sept. 9.



Sept. 10 - Dec. 5

72,507 acres

18% High Severity

On Sept. 10 and 11, winds shifted and drove the fire back into the area that burned the previous two days. Relatively mild to moderate weather conditions ensued for the duration of the fire.